

# SAMSUNG

## 360 CASSETTE

### Well rounded.

**A truly circular cassette.**

Enjoy even airflow from a beautifully sleek design that fits into any setting.



Product Registration Required  
Conditions Apply



# A round of applause.

This truly innovative system provides surround airflow evenly throughout the space. Available in black and white, you can choose a circle or square fascia panel.

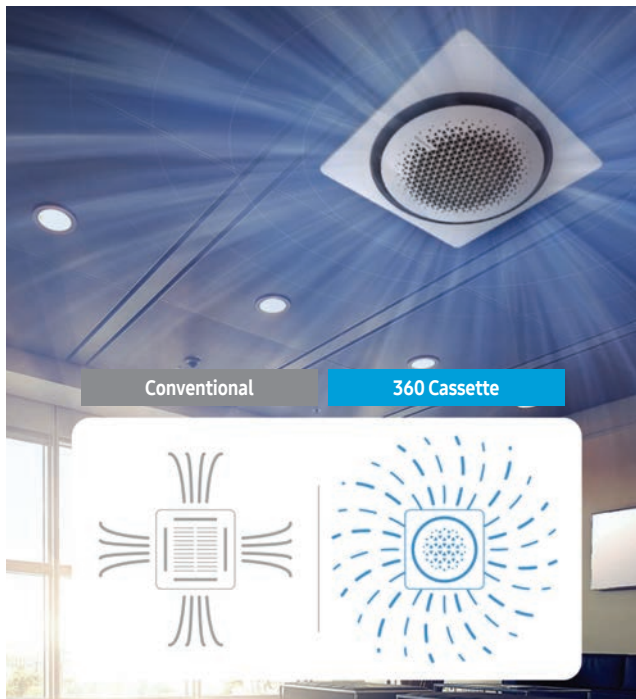






## Bladeless beauty.

Standard ceiling cassettes use blades on 4 sides of the unit to distribute air. This 4-sided distribution creates uneven room temperature, resulting in "cold" or "hot" spots. With bladeless technology and the use of 3 booster fans, the 360 Cassette provides even, horizontal airflow with the option to direct the air at various angles.



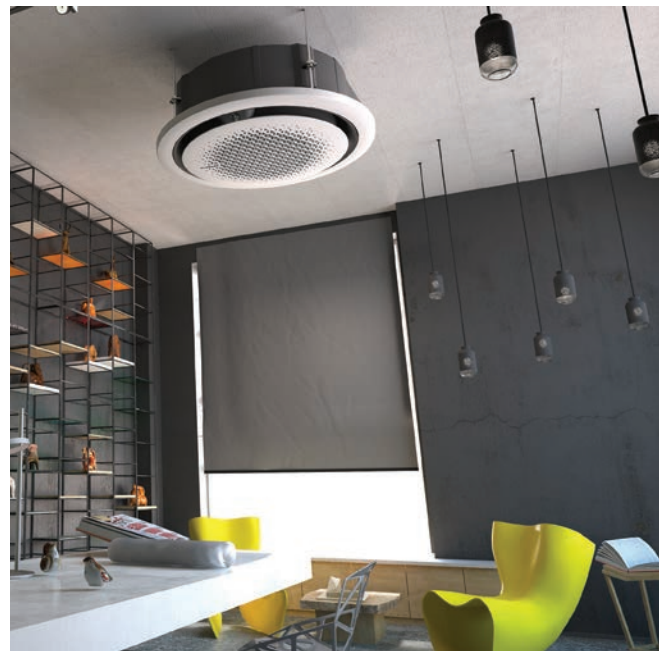
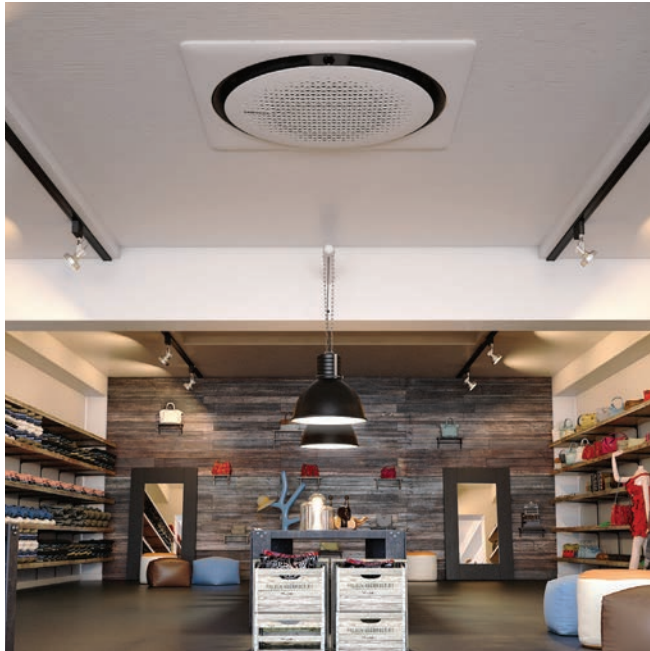






# Cool from every angle.

The 360 Cassette is available in a wide range of heating and cooling capacities to fit commercial and light commercial applications. Its innovative circular design can match a multitude of interior designs, so it perfectly fits in everywhere.



- Available as a 1-1 CAC system and models are also available for DVM S systems
- More efficient than conventional (non-inverter) systems
- Quiet Operation; 29dB of sound on the low speed setting. Applies to the 18k and 24k models.
- IF Design Award 2016 Winner (<http://ifworlddesignguide.com/>)



# Wi-Fi Adapter



Samsung's Wi-Fi Adapter allows for remote control of Samsung DVM S indoor units and CAC single zone systems from a mobile device when using the Samsung Smart Home App\*.

## App Features:

- Daily, weekly and monthly energy consumption monitoring\*\*
- Basic control and monitoring of power, mode, set temperature, room temperature, fan speed, and supply air louver position
- 7-day scheduling for single or multiple units



WI-FI ADAPTER (MIM-H03UN)

Maximum Wi-Fi Adapter Quantity Per System	
CAC Single Zone Systems	1
DVM S Systems	4

One MIM-H03UN Wi-Fi Adapter can control up to 16 indoor units on a single DVM S system, or connect a maximum of 4 adapters for control of up to 64 indoor units on the same system. Group configuration allows for simple control of multiple units connected to the same Wi-Fi Adapter.

# Individual Control

There are many different ways to control a Samsung system. For applications where a wireless controller is not acceptable (i.e. public facilities), three wired controllers, Simple, Touchscreen, and Premium are available to purchase as an option. Based on desired level of control and user interface preference, Samsung offers a variety of wired controllers suitable for any application.



WIRELESS REMOTE CONTROLLER  
AR-KH00U



SIMPLIFIED WIRED CONTROLLER  
MWR-SH00N



TOUCHSCREEN CONTROLLER  
MWR-SH10N



PREMIUM WIRED CONTROLLER  
MWR-WE11N

# Central Controls

Samsung's Data Management Server (DMS) lets you monitor and control your on-site air conditioning needs remotely. It's the easiest and most convenient way to manage a large number of air conditioning units at once.

## DMS 2.5:

- 24-hour standalone web-server
- No special software required
- All management functions integrated
- Heat pump auto changeover logic
- **DMS 2.5 + BACnet and LonWorks available**
- BACnet and LonWorks gateways will wire and setup the same as DMS 2.5



DMS 2.5  
MIM-D01AUN

Please refer to [www.dvmdownload.com](http://www.dvmdownload.com) for all control options, features, and specification.

\*Samsung's Smart Home App is available for download on iTunes and Google Play.

\*\*Energy consumption data is used for general reference only and should not be used for billing purposes. Data provided will not necessarily match your utility bill.

# CAC 360 CASSETTE

SPECIFICATIONS - 18,000 | 24,000 | 30,000

MODEL	INDOOR UNIT		AC018KN4DCH/AA	AC024KN4DCH/AA	AC030KN4DCH/AA
	OUTDOOR UNIT		AC018JXADCH/AA	AC024JXADCH/AA	AC030JXADCH/AA
PERFORMANCE	CAPACITY	COOLING	18,000 Btu/h	24,000 Btu/h	30,000 Btu/h
		HEATING	20,000 Btu/h	27,000 Btu/h	32,000 Btu/h
	CAPACITY RANGE	COOLING	5,000 - 21,000 Btu/h	7,000 - 27,000 Btu/h	9,300 - 35,000 Btu/h
		HEATING	3,800 - 25,000 Btu/h	5,200 - 31,000 Btu/h	9,000 - 38,000 Btu/h
	SEER / EER		20.10 / 11.40	20.50 / 11.10	19.20 / 10.40
	COP		3.66	3.20	3.06
HSPF		10.0	10.0	9.9	
POWER	VOLTAGE	ø / V / Hz	1 / 208-230 / 60	1 / 208-230 / 60	1 / 208-230 / 60
	MAX. BREAKER		15 A	20 A	30 A
	MIN. CIRCUIT AMPACITY		8.1 A	12.06 A	19.7 A
DIMENSIONS	W X H X D	INDOOR	37 1/4 X 11 X 37 1/4 in.	37 1/4 X 11 X 37 1/4 in.	37 1/4 X 14 3/8 X 37 1/4 in.
		OUTDOOR	34 5/8 X 25 1/8 X 12 1/4 in.	37 X 39 11/16 X 13 in.	37 X 39 11/16 X 13 in.
	WEIGHT	INDOOR	46.3 lbs.	46.3 lbs.	52.91 lbs.
		OUTDOOR	99 lbs.	142 lbs.	154 lbs.
SOUND PRESSURE LEVEL	INDOOR	L / M / H	29 / 32 / 35 dB(A)	29 / 33 / 36 dB(A)	31 / 35 / 38 dB(A)
	OUTDOOR	COOLING / HEATING (HIGH)	48 / 48 dB(A)	50 / 50 dB(A)	50 / 52 dB(A)
OPERATING TEMPERATURE	OUTDOOR	COOLING	(0*) 23 ≤ T ≤ 115°F	(0*) 23 ≤ T ≤ 115°F	(0*) 23 ≤ T ≤ 115°F
		HEATING	-4 ≤ T ≤ 76°F	-4 ≤ T ≤ 76°F	-4 ≤ T ≤ 76°F
PIPE CONNECTIONS	INDOOR & OUTDOOR	HIGH SIDE (FLARE)	1/4 in.	1/4 in.	3/8 in.
		LOW SIDE (FLARE)	1/2 in.	5/8 in.	5/8 in.
	MAX. LINE SET LENGTH		98 ft.	164 ft.	164 ft.
	MAX. VERTICAL SEPARATION		66 ft.	98 ft.	98 ft.
	CONDENSATE CONNECTION		1 1/4 in. OD, 1 in. ID	1 1/4 in. OD, 1 in. ID	1 1/4 in. OD, 1 in. ID
REFRIGERANT	TYPE		R410A	R410A	R410A
	FACTORY CHARGE		45.86 oz.	74.08 oz.	91.71 oz.
	CHARGED FOR		25 ft.	25 ft.	25 ft.
COMPRESSOR	TYPE		Inverter Driven, Twin BLDC Rotary	Inverter Driven, Twin BLDC Rotary	Inverter Driven, Twin BLDC Rotary
EVAPORATOR FAN	TYPE		BLDC (1) With Turbo Type Fan (1)	BLDC (1) With Turbo Type Fan (1)	BLDC (1) With Turbo Type Fan (1)
	AIR VOLUME	CFM (L / M / H)	480 / 547 / 646	480 / 547 / 646	632 / 741 / 904
CONDENSER FAN	MOTOR		BLDC With Axial Type Fan (1)	BLDC With Axial Type Fan (1)	BLDC With Axial Type Fan (1)
	CFM (MAX.)		1,550	2,190	2,219
FASCIA PANEL (SOLD SEPARATELY)	CEILING TYPE (SQUARE)	WHITE	PC4NUDMAN	PC4NUDMAN	PC4NUDMAN
		BLACK	PC4NBDMAN	PC4NBDMAN	PC4NBDMAN
		L X W X H	39 3/8 X 39 3/8 X 2 5/8 in.	39 3/8 X 39 3/8 X 2 5/8 in.	39 3/8 X 39 3/8 X 2 5/8 in.
		WEIGHT	7.94 lbs.	7.94 lbs.	7.94 lbs.
	OPEN TYPE (CIRCLE)	WHITE	PC4NUNMAN	PC4NUNMAN	PC4NUNMAN
		BLACK	PC4NBNMAN	PC4NBNMAN	PC4NBNMAN
		L X W X H	41 5/16 X 3 11/16 in.	41 5/16 X 3 11/16 in.	41 5/16 X 3 11/16 in.
		WEIGHT	5.95 lbs.	5.95 lbs.	5.95 lbs.
ACCESSORIES	WIRED CONTROLLER	SIMPLIFIED	MWR-SH00N	MWR-SH00N	MWR-SH00N
		SIMPLIFIED TOUCH CONTROLLER	MWR-SH10N	MWR-SH10N	MWR-SH10N
		PREMIUM W/ SCHEDULING	MWR-WE11N	MWR-WE11N	MWR-WE11N
	THERMOSTAT ADAPTER (24VAC)		TADPT2	TADPT2	TADPT2
	WIRELESS CONTROLLER		AR-KH00U	AR-KH00U	AR-KH00U
	WI-FI ADAPTER		MIM-H03UN	MIM-H03UN	MIM-H03UN
	EXTERNAL TEMPERATURE SENSOR		MRW-TA	MRW-TA	MRW-TA
	EXTERNAL CONTACT CONTROL		MIM-B14	MIM-B14	MIM-B14
	CENTRAL CONTROL INTERFACE MODULE FOR CONNECTION TO DVM PLUS CONTROLS (NON-NASA)		MIM-N01	MIM-N01	MIM-N01
	WALL BRACKET (FOR OUTDOOR UNIT)		CKN-250	CKN-250	CKN-250
	WIND BAFFLE/GUARD	FRONT	WBF-4M	WBF-2M	WBF-2M
		BACK	WBB-6M	WBB-3M	WBB-3M
	LINE SETS - INSULATED AND FLARED, INTERCONNECT CABLES INCLUDED		25' - ILS2507	25' - ILS2509	25' - ILS2510
			50' - ILS5007	50' - ILS5009	50' - ILS5010



Product registration required.  
Conditions apply.



The AHR Certified® mark indicates Samsung's participation in the AHR Certification program. For verification of individual certified products, go to [www.ahridirectory.org](http://www.ahridirectory.org).



Intertek

\*With Wind Baffles

Samsung HVAC maintains a policy of ongoing development, specifications are subject to change without notice.

# CAC 360 CASSETTE

SPECIFICATIONS - 36,000 | 42,000 | 48,000

MODEL	INDOOR UNIT		AC036KN4DCH/AA	AC042KN4DCH/AA	AC048KN4DCH/AA
	OUTDOOR UNIT		AC036JXADCH/AA	AC042JXADCH/AA	AC048JXADCH/AA
PERFORMANCE	CAPACITY	COOLING	36,000 Btu/h	42,000 Btu/h	48,000 Btu/h
		HEATING	40,000 Btu/h	47,000 Btu/h	53,000 Btu/h
	CAPACITY RANGE	COOLING	14,000 - 41,000 Btu/h	16,300 - 45,000 Btu/h	18,600 - 51,000 Btu/h
		HEATING	11,500 - 48,000 Btu/h	13,400 - 50,000 Btu/h	15,300 - 55,000 Btu/h
	SEER / EER		20.70 / 12.00	19.70 / 10.00	19.00 / 8.90
	COP		3.40	3.04	3.20
HSPF		9.7	9.5	9.5	
POWER	VOLTAGE		ø / V / Hz		1 / 208-230 / 60
	MAX. BREAKER				35 A
	MIN. CIRCUIT AMPACITY				22.08 A
DIMENSIONS	W X H X D	INDOOR	37 1/4 X 14 3/8 X 37 1/4 in.	37 1/4 X 14 3/8 X 37 1/4 in.	37 1/4 X 14 3/8 X 37 1/4 in.
		OUTDOOR	37 X 48 X 13 in.	37 X 48 X 13 in.	37 X 48 X 13 in.
	WEIGHT	INDOOR	52.91 lbs.	52.91 lbs.	52.91 lbs.
		OUTDOOR	194 lbs.	194 lbs.	194 lbs.
SOUND PRESSURE LEVEL	INDOOR	L / M / H	32 / 38 / 43 dB(A)	34 / 39 / 44 dB(A)	35 / 40 / 45 dB(A)
	OUTDOOR	COOLING / HEATING (HIGH)	49 / 51 dB(A)	51 / 53 dB(A)	53 / 55 dB(A)
OPERATING TEMPERATURE	OUTDOOR	COOLING	(0*) 23 ≤ T ≤ 115°F	(0*) 23 ≤ T ≤ 115°F	(0*) 23 ≤ T ≤ 115°F
		HEATING	-4 ≤ T ≤ 76°F	-4 ≤ T ≤ 76°F	-4 ≤ T ≤ 76°F
PIPE CONNECTIONS	INDOOR & OUTDOOR	HIGH SIDE (FLARE)	3/8 in.	3/8 in.	3/8 in.
		LOW SIDE (FLARE)	5/8 in.	5/8 in.	5/8 in.
	MAX. LINE SET LENGTH		246 ft.	246 ft.	246 ft.
	MAX. VERTICAL SEPARATION		98 ft.	98 ft.	98 ft.
	CONDENSATE CONNECTION		1 1/4 in. OD, 1 in. ID	1 1/4 in. OD, 1 in. ID	1 1/4 in. OD, 1 in. ID
REFRIGERANT	TYPE		R410A	R410A	R410A
	FACTORY CHARGE		98.77 oz.	98.77 oz.	98.77 oz.
	CHARGED FOR		25 ft.	25 ft.	25 ft.
COMPRESSOR	TYPE		Inverter Driven, Twin BLDC Rotary	Inverter Driven, Twin BLDC Rotary	Inverter Driven, Twin BLDC Rotary
EVAPORATOR FAN	TYPE		BLDC (1) With Turbo Type Fan (1)	BLDC (1) With Turbo Type Fan (1)	BLDC (1) With Turbo Type Fan (1)
	AIR VOLUME	CFM (L / M / H)	710 / 943 / 1,179	745 / 981 / 1,218	822 / 1,024 / 1,257
CONDENSER FAN	MOTOR		BLDC With Axial Type Fan (2)	BLDC With Axial Type Fan (2)	BLDC With Axial Type Fan (2)
	CFM (MAX.)		3,040	3,040	3,040
FASCIA PANEL (SOLD SEPARATELY)	CEILING TYPE (SQUARE)	WHITE	PC4NUDMAN	PC4NUDMAN	PC4NUDMAN
		BLACK	PC4NBDMAN	PC4NBDMAN	PC4NBDMAN
		L X W X H	39 3/8 X 39 3/8 X 2 5/8 in.	39 3/8 X 39 3/8 X 2 5/8 in.	39 3/8 X 39 3/8 X 2 5/8 in.
	OPEN TYPE (CIRCLE)	WHITE	PC4NUNMAN	PC4NUNMAN	PC4NUNMAN
		BLACK	PC4NBNMAN	PC4NBNMAN	PC4NBNMAN
		L X W X H	41 5/16 X 3 11/16 in.	41 5/16 X 3 11/16 in.	41 5/16 X 3 11/16 in.
		WEIGHT	5.95 lbs.	5.95 lbs.	5.95 lbs.
ACCESSORIES	WIRED CONTROLLER	SIMPLIFIED	MWR-SH00N	MWR-SH00N	MWR-SH00N
		SIMPLIFIED TOUCH CONTROLLER	MWR-SH10N	MWR-SH10N	MWR-SH10N
		PREMIUM W/ SCHEDULING	MWR-WE11N	MWR-WE11N	MWR-WE11N
	THERMOSTAT ADAPTER (24VAC)		TADPT2	TADPT2	TADPT2
	WIRELESS CONTROLLER		AR-KH00U	AR-KH00U	AR-KH00U
	WI-FI ADAPTER		MIM-H03UN	MIM-H03UN	MIM-H03UN
	EXTERNAL TEMPERATURE SENSOR		MRW-TA	MRW-TA	MRW-TA
	EXTERNAL CONTACT CONTROL		MIM-B14	MIM-B14	MIM-B14
	CENTRAL CONTROL INTERFACE MODULE FOR CONNECTION TO DVM PLUS CONTROLS (NON-NASA)		MIM-N01	MIM-N01	MIM-N01
	WALL BRACKET (FOR OUTDOOR UNIT)		CKN-250	CKN-250	CKN-250
	WIND BAFFLE/GUARD	FRONT	WBF-1M2	WBF-1M2	WBF-1M2
		BACK	WBB-2M	WBB-2M	WBB-2M
	LINE SETS - INSULATED AND FLARED, INTERCONNECT CABLES INCLUDED		25' - ILS2510	25' - ILS2510	25' - ILS2510
			50' - ILS5010	50' - ILS5010	50' - ILS5010



Product registration required.  
Conditions apply.



The AHRI Certified® mark indicates Samsung's participation in the AHRI Certification program. For verification of individual certified products, go to [www.ahridirectory.org](http://www.ahridirectory.org).



Intertek

\*With Wind Baffles

Samsung HVAC maintains a policy of ongoing development, specifications are subject to change without notice.



# DVM S 360 CASSETTE

SPECIFICATIONS - 9,000 | 12,000 | 18,000

MODEL	INDOOR UNIT		AM009KN4DCH/AA	AM012KN4DCH/AA	AM018KN4DCH/AA
PERFORMANCE	CAPACITY	COOLING	9,000 Btu/h	12,000 Btu/h	18,000 Btu/h
		HEATING	10,000 Btu/h	13,500 Btu/h	20,000 Btu/h
POWER	VOLTAGE	Ø, V, Hz	1 / 208-230 / 60	1 / 208-230 / 60	1 / 208-230 / 60
	POWER INPUT (NOMINAL)	COOLING / HEATING	26 / 26 W	26 / 26 W	26 / 26 W
	CURRENT INPUT (NOMINAL)	COOLING / HEATING	0.18 / 0.18 A	0.18 / 0.18 A	0.18 / 0.18 A
DIMENSIONS	W X H X D		37 1/4 X 11 1/16 X 37 1/4 in.	37 1/4 X 11 1/16 X 37 1/4 in.	37 1/4 X 11 1/16 X 37 1/4 in.
	WEIGHT		46.3 lbs.	46.3 lbs.	46.3 lbs.
SOUND PRESSURE LEVEL	INDOOR	L / M / H	29 / 31 / 33 dB(A)	29 / 31 / 33 dB(A)	29 / 31 / 33 dB(A)
PIPE CONNECTIONS	LIQUID PIPE		1/4 in.	1/4 in.	1/4 in.
	GAS PIPE		1/2 in.	1/2 in.	1/2 in.
	CONDENSATE CONNECTIONS		VP25 (1 1/4 in. OD, 1 in. ID)	VP25 (1 1/4 in. OD, 1 in. ID)	VP25 (1 1/4 in. OD, 1 in. ID)
REFRIGERANT	TYPE		R410A	R410A	R410A
	CONTROL METHOD		INTERNAL EEV	INTERNAL EEV	INTERNAL EEV
EVAPORATOR FAN	TYPE		BLDC With Turbo Fan	BLDC With Turbo Fan	BLDC With Turbo Fan
	AIR VOLUME	CFM (L / M / H)	494 / 530 / 565	494 / 530 / 565	494 / 530 / 565
FASCIA PANEL (SOLD SEPARATELY)	CEILING TYPE (SQUARE)	WHITE	PC4NUDMAN	PC4NUDMAN	PC4NUDMAN
		BLACK	PC4NBDMAN	PC4NBDMAN	PC4NBDMAN
		L X W X H	39 3/8 X 39 3/8 X 2 5/8 in.	39 3/8 X 39 3/8 X 2 5/8 in.	39 3/8 X 39 3/8 X 2 5/8 in.
		WEIGHT	7.94 lbs.	7.94 lbs.	7.94 lbs.
	OPEN TYPE (CIRCLE)	WHITE	PC4NUNMAN	PC4NUNMAN	PC4NUNMAN
		BLACK	PC4NBNMAN	PC4NBNMAN	PC4NBNMAN
		L X W X H	41 5/16 X 3 11/16 in.	41 5/16 X 3 11/16 in.	41 5/16 X 3 11/16 in.
		WEIGHT	5.95 lbs.	5.95 lbs.	5.95 lbs.
ACCESSORIES	WIRED CONTROLLER	SIMPLIFIED	MWR-SH00N	MWR-SH00N	MWR-SH00N
		SIMPLIFIED TOUCH CONTROLLER	MWR-SH10N	MWR-SH10N	MWR-SH10N
		PREMIUM W/ SCHEDULING	MWR-WE11N	MWR-WE11N	MWR-WE11N
	WIRELESS CONTROLLER		AR-KH00U	AR-KH00U	AR-KH00U
	WIFI ADAPTER		MIM-H03UN	MIM-H03UN	MIM-H03UN
	THERMOSTAT ADAPTER (24VAC)		TADPT2	TADPT2	TADPT2
	EXTERNAL TEMPERATURE SENSOR		MRW-TA	MRW-TA	MRW-TA
	EXTERNAL CONTACT CONTROL		MIM-B14	MIM-B14	MIM-B14



Product registration required.  
Conditions apply.



The AHRI Certified® mark indicates Samsung's participation in the AHRI Certification program. For verification of individual certified products, go to [www.ahridirectory.org](http://www.ahridirectory.org).



Samsung HVAC maintains a policy of ongoing development, specifications are subject to change without notice.

# DVM S 360 CASSETTE

SPECIFICATIONS - 24,000 | 30,000 | 36,000

MODEL	INDOOR UNIT		AM024KN4DCH/AA	AM030KN4DCH/AA	AM036KN4DCH/AA
PERFORMANCE	CAPACITY	COOLING	24,000 Btu/h	30,000 Btu/h	36,000 Btu/h
		HEATING	27,000 Btu/h	34,000 Btu/h	40,000 Btu/h
POWER	VOLTAGE	Ø, V, Hz	1 / 208-230 / 60	1 / 208-230 / 60	1 / 208-230 / 60
	POWER INPUT (NOMINAL)	COOLING / HEATING	38 / 38 W	54 / 54 W	71 / 71 W
	CURRENT INPUT (NOMINAL)	COOLING / HEATING	0.28 / 0.28 A	0.42 / 0.42 A	0.57 / 0.57 A
DIMENSIONS	W X H X D		37 1/4 X 11 1/16 X 37 1/4 in.	37 1/4 X 14 3/8 X 37 1/4 in.	37 1/4 X 14 3/8 X 37 1/4 in.
	WEIGHT		46.3 lbs.	52.91 lbs.	52.91 lbs.
SOUND PRESSURE LEVEL	INDOOR	L / M / H	32 / 35 / 38 dB(A)	36 / 38 / 40 dB(A)	38 / 40 / 43 dB(A)
PIPE CONNECTIONS	LIQUID PIPE		3/8 in.	3/8 in.	3/8 in.
	GAS PIPE		5/8 in.	5/8 in.	5/8 in.
	CONDENSATE CONNECTIONS		VP25 (1 1/4 in. OD, 1 in. ID)	VP25 (1 1/4 in. OD, 1 in. ID)	VP25 (1 1/4 in. OD, 1 in. ID)
REFRIGERANT	TYPE		R410A	R410A	R410A
	CONTROL METHOD		INTERNAL EEV	INTERNAL EEV	INTERNAL EEV
EVAPORATOR FAN	TYPE		BLDC With Turbo Fan	BLDC With Turbo Fan	BLDC With Turbo Fan
	AIR VOLUME	CFM (L / M / H)	512 / 583 / 671	706 / 795 / 901	777 / 883 / 989
FASCIA PANEL (SOLD SEPARATELY)	CEILING TYPE (SQUARE)	WHITE	PC4NUDMAN	PC4NUDMAN	PC4NUDMAN
		BLACK	PC4NBDMAN	PC4NBDMAN	PC4NBDMAN
		L X W X H	39 3/8 X 39 3/8 X 2 5/8 in.	39 3/8 X 39 3/8 X 2 5/8 in.	39 3/8 X 39 3/8 X 2 5/8 in.
		WEIGHT	7.94 lbs.	7.94 lbs.	7.94 lbs.
	OPEN TYPE (CIRCLE)	WHITE	PC4NUNMAN	PC4NUNMAN	PC4NUNMAN
		BLACK	PC4NBNMAN	PC4NBNMAN	PC4NBNMAN
		L X W X H	41 5/16 X 3 11/16 in.	41 5/16 X 3 11/16 in.	41 5/16 X 3 11/16 in.
		WEIGHT	5.95 lbs.	5.95 lbs.	5.95 lbs.
ACCESSORIES	WIRED CONTROLLER	SIMPLIFIED	MWR-SH00N	MWR-SH00N	MWR-SH00N
		SIMPLIFIED TOUCH CONTROLLER	MWR-SH10N	MWR-SH10N	MWR-SH10N
		PREMIUM W/ SCHEDULING	MWR-WE11N	MWR-WE11N	MWR-WE11N
	WIRELESS CONTROLLER		AR-KH00U	AR-KH00U	AR-KH00U
	WIFI ADAPTER		MIM-H03UN	MIM-H03UN	MIM-H03UN
	THERMOSTAT ADAPTER (24VAC)		TADPT2	TADPT2	TADPT2
	EXTERNAL TEMPERATURE SENSOR		MRW-TA	MRW-TA	MRW-TA
	EXTERNAL CONTACT CONTROL		MIM-B14	MIM-B14	MIM-B14



Product registration required.  
Conditions apply.



The AHRI Certified® mark indicates Samsung's participation in the AHRI Certification program. For verification of individual certified products, go to [www.ahridirectory.org](http://www.ahridirectory.org).



Intertek

Samsung HVAC maintains a policy of ongoing development, specifications are subject to change without notice.



# DVM S 360 CASSETTE

SPECIFICATIONS - 48,000

<b>MODEL</b>	INDOOR UNIT		AM048KN4DCH/AA
<b>PERFORMANCE</b>	CAPACITY	COOLING	48,000 Btu/h
		HEATING	54,000 Btu/h
<b>POWER</b>	VOLTAGE	Ø, V, Hz	1 / 208-230 / 60
	POWER INPUT (NOMINAL)	COOLING / HEATING	91 / 91 W
	CURRENT INPUT (NOMINAL)	COOLING / HEATING	0.75 / 0.75 A
<b>DIMENSIONS</b>	W X H X D		37 1/4 X 14 3/8 X 37 1/4 in.
	WEIGHT		52.91 lbs.
<b>SOUND PRESSURE LEVEL</b>	INDOOR	L / M / H	39 / 42 / 44 dB(A)
<b>PIPE CONNECTIONS</b>	LIQUID PIPE		3/8 in.
	GAS PIPE		5/8 in.
	CONDENSATE CONNECTIONS		VP25 (1 1/4 in. OD, 1 in. ID)
<b>REFRIGERANT</b>	TYPE		R410A
	CONTROL METHOD		INTERNAL EEV
<b>EVAPORATOR FAN</b>	TYPE		BLDC With Turbo Fan
	AIR VOLUME	CFM (L / M / H)	848 / 954 / 1,112
<b>FASCIA PANEL (SOLD SEPARATELY)</b>	CEILING TYPE (SQUARE)	WHITE	PC4NUDMAN
		BLACK	PC4NBDMAN
		L X W X H	39 3/8 X 39 3/8 X 2 5/8 in.
		WEIGHT	7.94 lbs.
	OPEN TYPE (CIRCLE)	WHITE	PC4NUNMAN
		BLACK	PC4NBNMAN
		L X W X H	41 5/16 X 3 11/16 in.
		WEIGHT	5.95 lbs.
<b>ACCESSORIES</b>	WIRED CONTROLLER	SIMPLIFIED	MWR-SH00N
		SIMPLIFIED TOUCH CONTROLLER	MWR-SH10N
		PREMIUM W/ SCHEDULING	MWR-WE11N
	WIRELESS CONTROLLER		AR-KH00U
	WIFI ADAPTER		MIM-H03UN
	THERMOSTAT ADAPTER (24VAC)		TADPT2
	EXTERNAL TEMPERATURE SENSOR		MRW-TA
	EXTERNAL CONTACT CONTROL		MIM-B14



Product registration required.  
Conditions apply.



The AHRI Certified® mark indicates Samsung's participation in the AHRI Certification program. For verification of individual certified products, go to [www.ahridirectory.org](http://www.ahridirectory.org).



Intertek

Samsung HVAC maintains a policy of ongoing development, specifications are subject to change without notice.

**SAMSUNG**

SamsungHVAC.com

360BR 12.2017 – V3